



**PRODUCTS
& CONTRACTING
SPECIALIST SERVICES**

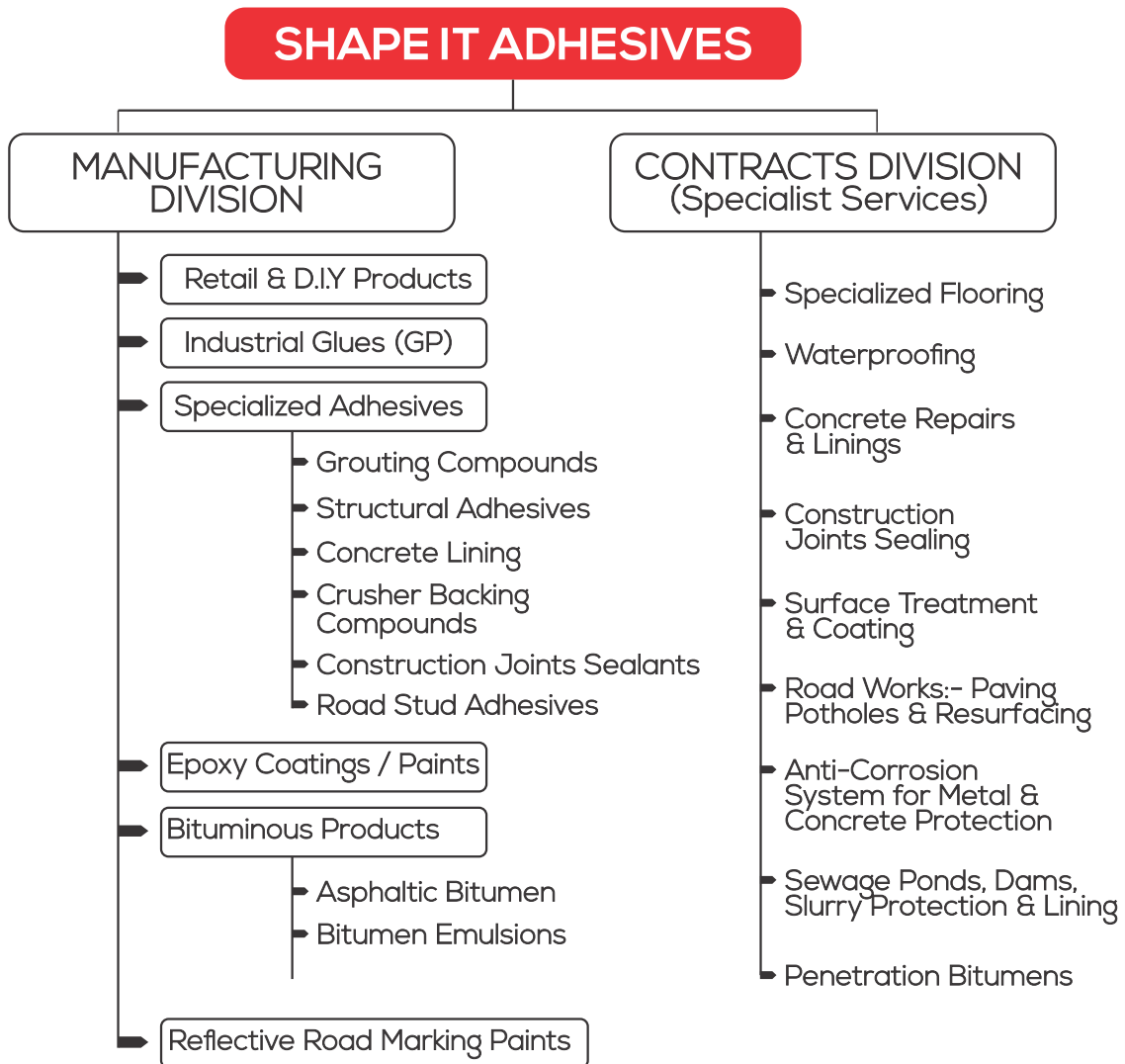


ABOUT SHAPE IT ADHESIVES

Shape It Adhesives (Pvt, Ltd is a material science and engineering company specializing in the manufacturing of adhesives, sealants and protective coatings. In addition, the company also offers specialist services including waterproofing, anti-corrosion systems, anti-wear systems, epoxy floors, construction joint sealants, concrete structural repairs and several other specialist construction services.

Shape It Adhesives products and services are an intergral part of any infrastructure development and rehabilitation programs.

Business & Product / Services Portfolio





WHERE YOU APPLY **OUR PRODUCTS**

SHAPE IT ADHESIVES

- ▶ Airports (Run-ways & Hangars)
- ▶ Road and Bridges Construction
- ▶ Civil Works - Concrete Joints
- ▶ Civil Works - Concrete Repairs & Bonding
- ▶ Civil Works - Concrete Lining & Waterproofing
- ▶ Rail Coaches / Wagons & Marine Boats Building
- ▶ Water Treatment Plants
- ▶ Power Plants (Thermal & HEPs)
- ▶ Mines
- ▶ Chemical Plants
- ▶ Farms & Estates - Water Bodies & Canals
- ▶ Food Processing & Beverages Plants
- ▶ Pharmaceuticals and Hospitals
- ▶ Retail & Hardware Outlets
- ▶ Grain Silos and Bins
- ▶ Sewage Plants

SPECIALIST SERVICES

WATER-PROOFING SERVICES

- Flat Deck Roofs
- Water Retaining Structures (Dams, Ponds & Water Reservoirs)
- Basements & Retaining Walls
- All Other Leaking Structures



CONSTRUCTION ADHESIVES

- Concrete Repair Adhesives
- Concrete-Metal Bonding
- Heavy Duty Chemical Grouting/ Anchoring
- Construction Joint Sealants
- Epoxy Mortars & Liners
- Structural Adhesives



SURFACE TREATMENT & COATINGS

- Industrial Coatings
- Protective Coatings (Epoxy & PU Paints)
- Wall lining & Coatings
- Anti-Corrosion Tapes & Coatings
- Epoxy Flooring
- Crusher Backing Compound (For Ore Crushers & Mill Liners)
- Concrete base coatings
- Wall Linings



ROAD CONSTRUCTION PRODUCTS

- Road Reflector Studs
- Sealants For Bridges
- Cat Eyes Adhesives
- Bitumen Emulsions
- Penetration Bitumen Grds
- Road Construction Accessories





WATER & DAMP PROOFING PRODUCTS

ROOF DECK WATERPROOFING

SHAPEIT ADHESIVES offers a variety of water and Damp proofing solutions / services for various structures notably:

- 1 Flat Deck Roofs
- 2 All Other Types Of Leaking Roofs
- 3 Underground Tunnels, Basements & Retaining Walls
- 4 Water Retaining Structures: Dams, Ponds & Water Reservoirs
- 5 General Leak Repair (radiators, water pipes, HDPE tanks etc)

FLAT DECK ROOFS WATER PROOFING

Shape Bituminous waterproofing systems are designed to protect all civil concrete structures that are exposed to rain water, underground water/ moisture or that contain water.



WATER PROOFING PRODUCTS FOR FLAT DECK ROOFS

- Shape Mastic Asphalt (10mm & 20mm)
- Shape Torch-on Membranes (3mm & 4mm)
- Shape Mastic & PU Combo (11.5mm)
- Shape flashing fabric membrane
- Shape Mastic Sealer (Auto-Cote)

GENERAL ROOF MAINTAINANCE

1. SHAPE EPOXY PASTE

A multi-purpose epoxy paste that gives a permanent bond (seal). Widely used in various repair works e.g. sealing cracks in concrete, asbestos, bonding metals & concrete, IBR/ corrugated sheets, tiles, asbestos & steel pipes etc.



2. SHAPE NON-SLUMP

A multi-purpose non-slump epoxy paste that gives a permanent bond (seal) & is widely used in various repair works e.g. sealing cracks in concrete, asbestos, bonding metals & concrete, IBR/ corrugated sheets, tiles, asbestos & steel pipes etc.



3 SHAPE MASTIC SEALER (AUTO-COTE)

A solvent based bituminous compound with multiple sealing, waterproofing, sound proofing applications that is cold applied. Widely used for weather proofing of all types of roofs, concrete and plaster, skirting or up-stands; vehicle underbody corrosion protection; dust proofing and sound deadening.



4 SHAPE KWIK-SEAL

A multipurpose instant leak repair self-adhesive tape available in different dimensions, 50mm & 75 mm width & up to 20m in length. It resists temperatures up to 100°C and has negligible shrinkage.

USES:

- Sealing Extractor vents & rain water outlets
- Gutter linings & pipe flashings
- General sealing on roofing materials (asbestos, corrugated, tiles, IBR etc).
- Protective wrapping - external insulation & anti corrosive pipe wrapping





MAINTENANCE OF **WATER & SANITATION INFRASTRUCTURE**

INFRASTRUCTURE THAT NEED WATER PROOFING

- Sewer & Effluent Ponds Linings
- Water & Sewage Pipes (Concrete & Steel)
- Water Treatment Plants
- Water Reservoirs (Concrete & Galvanized)
- Chemical Processing Plants
- Chemical Warehouses
- Irrigation Canals
- Fish Ponds & Crocodile Pens
- Swimming Pools



SHAPE IT PRODUCT OPTIONS FOR WATERPROOFING SUCH INFRASTRUCTURE

1. Shape Sewer-Gard Liner A.R.G.
2. Shape Tar-Cote Black.
3. Shape Bitu-cote.
4. Shape Aqua-cote.
5. Shapeflex Expansion Joint Sealer
6. Shape Epoxy Mortar ARG
7. Shape Epoxy Flooring HD
8. Shape Pipewrap
9. Shape Mastic Asphalt
10. Shape HDPEs





SOME OF OUR WORKS: FOR ZIMFUND **AFRICAN DEVELOPMENT BANK COMPLETED PROJECTS**

**SUPLIER OF SPECILIALIZED PRODUCTS & SERVICES DURING
THE CONSTRUCTION OF CHIKANGA WATER RESERVOIRS (MUTARE)**

INTERIOR RESERVIOR WALLS BEFORE TREATMENT



PRODUCTS & SERVICES PROVIDED

- Structural & high load bearing Epoxy mortar
- Structural & ring bunting adhesives
- Construction Joint Sealants
- Concrete Lining Epoxies
- PU Water-proof coating
- PU Roof Deck insulation Material

THE COMPLETED 10 MILLION LITRE CHIKANGA WATER RESERVOIR





WATER PROOFING OF BASEMENTS AND RETAINING WALLS



WHY BASEMENT WATER PROOFING

- To provide protection against structural damages and liabilities.
- To eliminate or minimize vulnerability of structures to weather elements.
- To provide a dry environment that is free of mold, mildew and preventing the ruining of the flooring and walling materials.
- To provide resistance to root and water penetration into walls.

Basement foundations, walls, retaining walls or any structure built below ground level require water proofing.

Shape It provides a variety of solutions for underground or basement waterproofing and vary from situation to situation depending on a number of factors e.g. soil condition, construction material used, climatic conditions etc.

SURFACE TREATMENT & COATINGS

ANTI CORROSION & ANTI WEAR SYSTEMS

COMMON MAINTENANCE ISSUES

Corrosion of Infrastructure due to:

- Chemical attack by toxic & corrosive chemicals
- Spillage of corrosives that attack the infrastructure
- Abrasion by solid waste material
- Leakages (tanks, pipes, walls & roof decks)
- Dampness
- Corrosive soil organics



VULNERABLE AREAS

- Concrete & Metal structures
- Inner surfaces (both concrete & Metals) for municipal & industrial water infrastructure
- Walls & floors for water/chemical solution retaining structures namely:
 - Chemical solution tanks
 - Filtration tanks
 - Chemical warehouses
 - Water & Sewage Pipes (Concrete & Steel Pipes)
 - Sewer ponds
 - Water reservoirs
 - Water treatment plants



SHAPE IT ANTI - CORROSION PRODUCT OPTIONS

1. Shape Sewer-Gard Liner A.R.G. (Acid Resistant Grade)
2. Shape Tar-Cote Black.
3. Shape Bitu-cote.
4. Shape Aqua-cote.
5. Shapeflex Expansion Joint Sealer
6. Shape Epoxy Mortar NAG
7. Shape Epoxy Flooring HD
8. Shape Anti-Corrosion Pipewrap





SURFACE TREATMENT & COATINGS

ANTI CORROSION & ANTI WEAR SYSTEMS

PROTECTION OF PIPES

LASTING SOLUTION TO CORROSION & ABRASION (SCRATCH PROTECTION)



USED TO PROTECT FROM CORROSION:	THEY ARE NOT AFFECTED BY:
Below/above ground and under-water pipes Both Metal & Concrete Pipes & Services Flanges & cables as well concrete pipe joints.	Water, Chemicals & Acids Soil organics, extreme temperature variations, applied to both cold & wet surfaces.

1. SHAPE EPOXY COATINGS (PAINTS)

These can be applied on a variety of materials including but not limited to metal I steel, wood & concrete structures.

Special Benefits

- Chemical strength I resistance,
- Water resistance
- High bonding strength
- Can withstand below zero and relatively high temperatures (some as high as plus 100°C)
- Fast curing time.



2. SHAPE BITUMEN BASED COATINGS (PAINTS)

These can be applied on a variety of materials including but not limited to metal I steel, wood & concrete structures.

Special Benefits

- Chemical strength I resistance,
- Water resistance
- High bonding strength
- Can withstand below zero and relatively high temperatures (some as high as plus 100°C)
- Fast curing time.



3. SHAPE ANTI-CORROSION & WATERPROOF PIPE WRAP

A Shape product for anti-wear & anti corrosion protection of sewer/water pipes (concrete & steel) laid above/ below ground & underwater.

Special Benefits

- Gives a varying coating thickness (3mm-10mm)
- Not affected by water, solid organic waste & other acids.
- Withstands extreme temperature variations
- Gives a lasting solution to corrosion & abrasion



SURFACE TREATMENT & COATINGS

Specialized Epoxy and Polyurethane Floors



COMMON AREAS FOR EXPOXY / PU FLOORING

- Food Processing Industry
- Pharmaceutical & Medical Industries
- Butcheries & abattoirs,
- Hatcheries,
- Food factories,
- beverage & dairy plants
- Clinics & Hospitals
- Chemical Storage Tanks
- Reaction & process tanks
- Acid or storage tank houses
- Cyanidation & leach tanks
- Floatation Cells
- Exposed Structural Members [beams, columns, weigh bridges etc]

BENEFITS OF AN EPOXY FLOOR

- Chemical strength | resistance
- Water resistance,
- High bonding strength
- Tolerance to extreme temperatures
- Fast Curing
- No joints (Seamless)
- Easy to clean
- Can be Non-Slip





CONCRETE AND STRUCTURAL BONDING

1. SHAPE EPOXY MORTAR

Special Benefits

- bonds well to both old & new concrete
- cured bonds are actually stronger than concrete itself
- excellent chemical & fuel resistance
- high Load bearing value
- gives varying thickness with negligible shrinkage
- Very easy to apply (Can be applied with a trowel)
- Fast Curing

COMMON AREAS OF APPLICATION

- Grain silos
- Dam Walls
- Water reservoirs,
- Crocodile pens
- Irrigation canals
- Chemical plant structures
- And many other concrete structures

CONCRETE REPAIR MORTAR

A Shape product for repairing/ rebuilding worn out concrete, protecting exposed reinforcements & correcting structural deformities on concrete structures or members (e.g. beams, columns, pillars etc.)



2. HEAVY-DUTY CHEMICAL GROUTING & ANCHORING

A high-performance solvent-free epoxy based cold-curing resin for use in construction & civil engineering where consistent high load performance is a prerequisite. It is ideal for Vertical & Horizontal applications in large diameters, deep and even large-sized drill holes and it produces stronger bonds than the base material.

SPECIAL BENEFITS

- Excellent adhesion to steel & concrete
- High performance & load value: therefore absorbs the load & vibration
- Non-shrink and non-sag
- Fast & curing time
- High strength bonds

APPLICATIONS

1. Heavy-duty grouting or anchoring of
 - Re-bars,
 - Starters
 - Bars,
 - Threaded bars, etc,
 - Dowels
 - Anchor stands
 - Bolts
2. Steel reinforcements
3. Setting machine bases & bearing plates
4. Filling underground structural fissures and stopping bolt holes leaks
5. Heavy Duty Machinery foundations
6. Repair of Heavy Duty Machinery foundations

CONCRETE AND STRUCTURAL JOINT SEALING

EXPANSION & CONTRACTION

JOINT SEALING IN CONSTRUCTION



SHAPE EXPANSION JOINT SEALANTS

Shape It products for construction joint sealing in structures subject to low movement.

Three distinct grades are available namely:

1. Bitumen based expansion joint sealer - mostly for horizontal joints
2. Polysulphide based expansion joint sealer- for both horizontal & vertical joints
3. Polyurethane (PU) based expansion joint sealer-for both horizontal & vertical joints

Structures that require Expansion Joint Sealing / Flexing

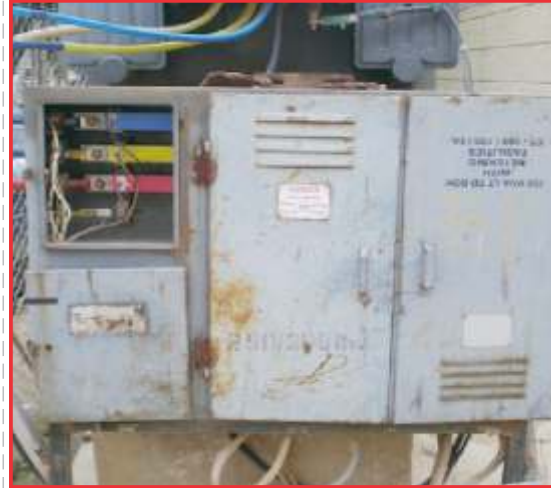
- Water reservoirs
- Sub-ways
- Culverts
- Industrial floors
- Run-ways
- Large Concrete slab surfaces
- On all Water retaining structures including filtration tanks where it provides airtight seals & to enhance the filtration/suction process
- Basements
- Bridges
- Concrete irrigation canals
- Terminals
- Columns

SPECIAL BENEFIT

- Cures at room temperature to a tough, elastomeric material
- Bonds strongly to most of the building materials with the use of recommended primers
- Resistant to UV, ozone and weathering conditions
- Resistant to water.
- Movement capability- Provides satisfactory hermetic sealing of the joint subjected to expansion, contraction, vibration and cyclic movements within joints up to + 25 % of the width
- Resilient - recovers the original width after expansion & contraction without losing the surface bond
- The two-part jointing system (as with PU & Polysulphide Sealants) are not just resistant to water but to harsh elements like brine, 10 % di/. Acids (except Nitric acid), alkalis, most common chemicals, lubrication oils and grease.



ANTI-WEAR PRODUCTS AND SEALANTS



CRUSHER BACKING COMPOUNDS (Shape Roc-Bak)

Two-component Crusher backing resin with excellent anti-wear properties used for protection of exposed functional metal surfaces particularly those for mining & quarrying equipment such as jaw crushers, mill liners, shell liners, mill ends, re-enforcement of metal liner plates, filling of liner gaps, etc

Special Benefits

- Very user friendly:- cold pouring, therefore faster, easier and safer than using molten metal
- Robust:- produces a protective backing film of high compressive and tensile strength
- Provides excellent chemical & electrical resistance
- Low maintenance downtime - has a quick curing time
- can also be used for other purposes e.g. electrical jointing & encapsulation



NON-HARDENING SEALANTS

Ready to use a single pack that is permanently tacky, self-adhesive & non-hardening (Elastomeric) putty used in sealing, jointing, weatherproofing, plugging of filling and many other applications

General Characteristics

- Weather-proof
- Pliable
- Non-Toxic
- Permanent Elasticity
- Resistant to Industrial Atmospheres; oxidation, stable to light, dust & waterproof
- Excellent Adhesion most properties

Available Sealants

Shape 100 Sealing Compound

Shape Cable Duct Sealer

Shape Weatherguard (BICC)

Shape Plumbseal



Shape It hard casting grades as they are commonly known, are irreplaceable in the **foundry industry** where they are commonly used in the production of **moulds, dies, models, jigs, punches & general pattern making.**

ROAD CONSTRUCTION MATERIALS **ADHESIVE, COATINGS & ASPHALT MATERIALS**



WE ARE PROVIDERS OF THE MOST CRITICAL MATERIALS FOR ROAD CONSTRUCTION

1. Road Reflector Studs
2. Road Stud Adhesives
3. Bridge Expansion Joint Sealants
4. Concrete Bonding Products
5. Road Marking Paints (solvent & Thermoplastic)
6. Bitumen Emulsions (stable 60, Cat Mix & Mc 30)
7. Penetration Bitumen Grades (bitumen 70/100 & Bitumen 60/100)
8. Polymer Modified Bitumens
9. Traffic Control & Road Signs & Accessories





ROAD CONSTRUCTION PRODUCTS

PROUD SUPPLIER OF ROAD CONSTRUCTION MATERIALS DURING THE CONSTRUCTION OF THE NEW HARARE INTERNATIONAL AIRPORT ROAD



RETAIL ADHESIVES D.I.Y (DO IT YOURSELF) PRODUCTS



This group of products constitute the widest in terms of depth, width, variety and applications.

They range from emulsions based adhesives comprising of wood to wood glues (ie for laminating, structural & finger jointing), paper to paper glues; to contact adhesives including Shape It Super Contact adhesive and Shape It PVC Solvent Cement & Epoxy & PU based adhesive for bonding various materials.

SHAPE IT DIY PRODUCTS

- Shape Epoxy Putty
- Shape Epoxy Steel
- Shape Quick-Set
- Shape Kwik-Seal
- Shape Triple S Superglue
- Shape Stiki-Tuff
- Shape Woodglue
- Shape Contact Adhesive
- Shape PVC Solvent Cement





CONTACT DETAILS

COMPANY DIRECTIONS FROM HARARE CBD





SHAPE IT ADHESIVES (PVT) LTD
enquiries@shapeitadhesives.co.zw

**20 Shepperton Road, Graniteside,
Harare, Zimbabwe**

Tel: +263 242 777911/2, +263 8644 270863, +263 8644 270866

Email: sales@shapeitadhesives.co.zw

Technical Advice Hotlines: +263 774 157 787

www.shapeitadhesives.co.zw