




COMPANY PROFILE





CONTACT DETAILS

ZIMBABWE

BULAWAYO OFFICES

 21 Conluit Industrial Park
Steeldale, Khami Road
Bulawayo, Zimbabwe

 +263(9)883051


 +263 717 967 468 /
+263 784 283 678


 sales@hemsafrika.com




www.hemsafrika.com


HARARE OFFICES


 3rd Floor Travel Plaza, Harare
Cnr J. Chinamano/ Mazowe St
Harare, Zimbabwe


 +263 (242) 705910


 saleshre@hemsafrika.com

SOUTH AFRICA

 35 Fricker Road
Ground Floor,
Ethos Building
Illovo , Sandton,
Johannesburg 2196

 Tel: +27 10 012 3330

 Cell: +27 60 613 0206

 admin@hemsafrika.com

VISION

To lead in the supply of Quality Engineering services and products to the African market.

MISSION

Providing unparalleled high-quality engineering products and services by offering:

1. Engineering products and services including back-up spares to the mining sector and industry in general.
2. High quality products and services to the clients at an affordable price through innovation and product development.
3. A comprehensive after sales service through maintenance programs, repairs and refurbishments.
4. Adherence to strict delivery/completion schedules in order to minimise client downtime.

QUALITY ASSURANCE: -

We are committed to providing top quality products that conform to international standards through zero tolerance working standards

DIVERSIFIED ENGINEERING SERVICES.

(i)

ENGINEERING

(Structural and Mechanical).

(ii)

HIRE SERVICES

(Cranes, Plant and Equipment, Transport and Logistics).

(iii)

SUPPLIES

(Plant , Equipment, Industrial & Mining Supplies).

(iv)

CONTRACTING AND PROJECT MANAGEMENT

(Including Plant Maintenance).

PRODUCTS & SERVICES

1. ENGINEERING (STRUCTURAL & MECHANICAL)

1.1 Fabrication & Erection

Shop fabrication and onsite installation of light, medium and heavy steelwork projects namely:

a) Structural Steelwork

Roof steelwork & support structures, Access stairways and platforms, Bridges Architectural steelwork

b) Plate-work

Tanks-process tanks, storage vessels, water tanks, petroleum tanks, chutes

c) Pipe work

Medium to large Bore steel Piping

d) Roof Sheeting and cladding

e) Open grid flooring-supply and fix

f) Hand-railing

g) CNC laser cutting, bending and drilling (Sub-Contract works)



1.2 Machining

a) Machining: - Shaping, Turning and Milling of mechanical components and spares such as:
shafts, keyways, flanges, couplings, Bushing, Gear cutting, spares.



1.3 Mechanical Assemble and Installation

a) Assembling and installation of Mechanical plant and equipment, process plants and material handling plants

2 HIRES

2.1 Plant and equipment hire

a) Lifting equipment

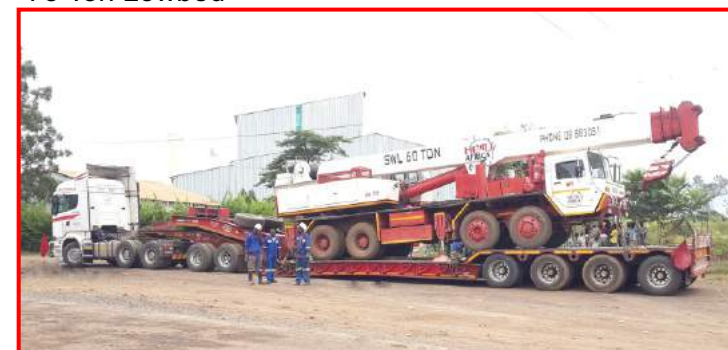
- Cranes 14Ton up to 60Ton
- Above 60Ton (Brokerage)
- Double Axle Truck with 15Ton Lifting Hiab
- 5Ton Telescopic Telehandler

b) Rigging Tackle

Electric Hoists up to 3Tons, Turfors, Chain blocks etc

c) Lowbeds

- 55 Ton Lowbed
- 75 Ton Lowbed



PRODUCTS & SERVICES

2.2 Skilled labour hire

Boiler makers, Boiler makers, Pipe Fitters, Fitter and turners, Riggers, Welders (Coded), Sheetters, Steel erectors, Electricians

2.3 Transport and Logistics

We specialise in large to abnormal load transportation of goods & equipment locally & regionally. Our Contracting division provides the support service of loading, off-loading & site installation of the transported goods



3 SUPPLIES

3.1 Plant and equipment: -

a) Manufactures of:

Head gears, Man cages, Ore Skips, Conveyor Systems, Granby cars, Coco pans

b) Supplies (Out - Sourcing):

Crushing Equipment (Jaw crushers, Roll crushers, Cone crushers), Mobile and semi-mobile crushing stations, Scrubbers and ball mills, Vibro Screens, Apron feeders Scrubbers and ball mills, Bucket elevator systems, Stackers/ Reclaimers, Air Environment Control (Electrostatic Precipitators, Reverse Pulse Bag, filters, Dynamic Scrubber)

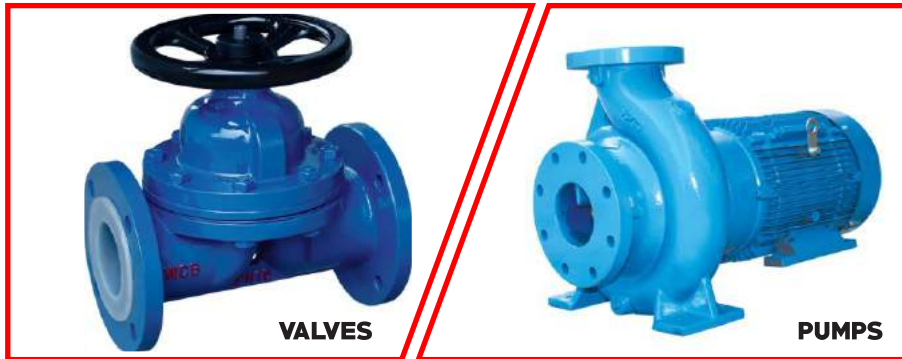


PRODUCTS & SERVICES

3.2 Industrial and Mining supplies

We provide equipment that helps mining and processing companies reduce costs, save energy, limit environmental impact and improve working conditions for their employees.

We are distributors of a wide range of top brand machines from standard sizes to heavy duty machines.



a) Steel

i. Steel Plates & Sections

Universal Beams, IPE Sections, CFLC, Angles, Round Bars, Steel Pipes

ii. Stainless Steel plates and sections

iii. Aluminium

Plate and Sections

iv. Wear Plates

Bennox, VRN, Hardox

v. Roof sheeting

vi. Palisade Fencing



b) Mechanical

i. Valves

Diaphragm, Ball, Butterfly, Slurry

ii. Pumps

Centrifugal, Mono, Submersible, Vortex flow

c) Mining Chemicals

- i. Nitric Acid ii. Sulfuric Acid iii. Cyanide iv. Hydrochloric Acid



4 CONTRACTING AND PROJECT MANAGEMENT

4.1 Project managers

Our project management team includes engineers and Technicians experienced in the execution of all types of engineering jobs & Turn-key Projects



4.2 Specialists Contractors

We are specialist contractors in:

1. Structural Steelwork supply & erection
2. Mechanical assembling and Installation
3. Pipework supply & Installation
4. Sub Contract Civil & Electrical works



4.3 Plant Maintenance Contractors

Our Project management team & skilled labour resource base provides maintenance services to Mines and Process plant establishments on a planned maintenance bases or Plant shutdown periods

CRANAGE

1

14 Ton Mobile Crane

Capacity : 14 Tonne
MaximumBoomLength : 16 Metres
Type : Rough Terrain

2

18 Ton Mobile Crane

Capacity : 18 Tonne
MaximumBoomLength : ± 21 Metres
Type : Rough Terrain

3

25 Ton Mobile Crane

Capacity : 25 Tonne
MaximumBoomLength : 19.89 Metres
Type : Rough Terrain

4

30 Ton Mobile Crane

Capacity : 30 Tonne
MaximumBoomLength : 24 Metres
Type : All Terrain



CRANAGE

5

50 Ton Mobile Crane

Capacity : 50 Tonne
MaximumBoomLength : 42 Metres
Type : All Terrain

6

60 Ton Mobile Crane

Capacity : 60 Tonne
MaximumBoomLength : 42 Metres
Type : Trunck Mount

7

80-300 Ton Mobile Crane (Brokerage RSA)



KEY PROJECTS UNDERTAKEN

1. STRUCTURAL STEELWORKS FOR NEW CHIBUKU SUPER-FLOW PLANT AT DELTA FAIRBRIDGE BULAWAYO.

- a. Client : Delta Beverages (Pvt) Ltd.
- b. Engineers : Inter-Africa Consulting Engineers
- c. MainContractor : Techno Expert Construction.
- d. Period : Oct 2014 to September 2015.
- e. Scope of Works

Takedown existing Plant and Structural Steelwork.

Supply, fabrication and Erection of new Structural Steelwork Including sandblasting and painting of existing Steelwork. Supply and installation of new Open grid flooring, handrailing. Rigging and installation of new Imported Plant equipment.



2. MIMOSA MINE - MODIFICATIONS TO 16NO. 5M3 FLOTATION CELLS (TANKS) COMPLETE WITH DRIVE UNITS

- a. Engineers : Metso Minerals
- b. Client : Mimosa Mine
- c. Period : Oct 2014 to Sept 2015
- d. Scope of Works

To dismantle existing Cells, Fabricate extension materials and adjust Tank capacity by increasing top section and add peripheral launder system. Machine and extend the Flotation drive shafts, refurbish Tanks and assemble.



3. JMN NKOMO AIPORT STRUCTURAL STEEL WORK - PRESIDENTIAL CANOPY

- a. Client : CAAZ
- b. Achitect : Studio Arts
- c. Engineers : Civil Consult
- d. Period : April 2011 to July 2011
- e. Scope of Works

Supply,Fabrication, Delivery and Erection of Achitectural steelwork Canopy.



KEY PROJECTS UNDERTAKEN

4. FABRICATION AND INSTALLATION OF THE MAIN FLOTATION SHED STEELWORK WITH COMPLETE SHEETING AND CLADDING

- a. Client : RIO-ZIM
- b. Period : 2017-2018
- d. Scope of Works
Fabrication and installation of Main Floatation shed-main columns and rafters



5. STAR AFRICA : RIG OUT & RELOCATE SUGAR PROCESSING PLANT & FABRICATION INSITU OF STAINLESS STEEL STORAGE TANKS

- a. Client : Star Africa
- b. Period : Oct 2013 - March 2014
- c. Scope of Works
Safe Rigging out of Large Tanks and sugar processing equipment from a confined Factory building and relocated to Gold Star Harare expansion project and Insitu manufacture at the Harare plant of 3No. Large diameter stainless steel tanks



6. PRETORIA PORTLAND CEMENT (PPC) LTD :SKILLED LABOUR FOR UNIDON PLANT

- a. Client : PPC, Fairbridge, Bulawayo
- b. Period : Nov 2012 to May 2013
- c. Scope of Works
Supply of Skilled labour (Fitters) and equipment for the site dismantling of existing and Installation of new Unidon plant.



7. CHROME BLOCKING PLANT (STRUCTURES, CONVEYORS & MECHANICAL INSTALLATION)

- a. Client : ZIMASCO
- b. Achitect : Studio Arts
- c. Engineers : H. Birkenmayer (RSA)
- c. Period : 2003 - 2004
- d. Scope of Works : Provision of project management services. Supervision of shop fabrication of conveyor steel structures. Supervision of site installation of conveyor steel structures & the mechanicals thereof

KEY PROJECTS UNDERTAKEN

8. CHROMADECK ROOF SHEETING AND CLADDING

- a. Client : Masimba Holdings
- b. Period : March 2016 - August 2016
- d. Scope of Works
Chromadeck roof sheeting and cladding at Delta Chibuku Masvingo Plant 2016



9. SPENT GRAIN HOPPERS

- a. Client : Delta Beverages
- b. Period : 2016
- c. Scope of Works
Fabrication and site installation of 2 No.
Spent Grain Hoppers c/w stands for Delta Chibuku Masvingo and kwekwe Plants.



10. BNC SHANGANI MINE : MODIFICATIONS TO UNDERGROUND LEVEL CONVEYOR, CRUSHER & ORE PASS CHUTES AND PROVISION OF SKILLED LABOUR FOR OTHER MAINTENANCE WORKS

- a. Client : Shangani Mine
- b. Period : 1 year (2006 – 2007)
- c. Scope of Works
Supply fabrication and Erection of Chutes, modifications to conveyor and crusher at 915Lvl.
Provision of skilled labour and equipment for Mine maintenance works.



OTHER PROJECTS UNDERTAKEN

1. Blanket Mine : Installation and Commissioning of Ball/Rod Mill - 2003
2. National waste Company : Relocation of Akupac Waste baler (Structural & Mechanical Works) : Feb 2004.
3. CAAZ/ZECO : Architectural Roof Steelwork for the Joshua MN Nkomo Airport : 2004
4. Min. Of Mine : 4No. Stamp Mills 1450LB : Supply & Manufacture - 2005
5. Costain Zim : Balustrading, Staircases and Catladders for Delta Beverages in Gokwe - 2005
6. Fidelity Printers : 4No. 10 000Ltr Skid Fuel tanks (Fabrication and Installation). National Project - 2006.
7. Archer Clothing : 10 000Ltr Underground Fuel Tank : Supply and Installation - 2006
8. How Mine - Granby Cars Modifications - 2007.
11. RBZ - Gold Milling Plant - Supply, fabrication, Installation and Commissioning (Turnkey Project) in Penhalonga & Fort Rixon - 2008
12. Zimasco - Fabrication of 3 No. Furnace Yokes - 2010
13. Schweppes - Refurbishment & Installation of 9 metre Diameter Process water tank - 2010
14. How Mine - Stiffening & refurbishment of Agitator Tanks - 2010
15. PPC (Colleen Bawn) - 4 months shut down site works involving site fabrications of structural steel and platework - 2011.
16. Cezzane Mine - Milling Plant c/w Cyanidation Plant: 2011
17. Zimbabwe Power Company (ZPC) - Structural Repairs on the Ash head: 2011
18. How Mine - Spillage Box Chute c/w Redial Door 2012
19. Zimbabwe Power Company (ZPC) - Railway Wagon Coal Tipper Repairs: 2012
20. How Mine Single Deck Mancage: 2012
21. PPC Byo Factory - Fabricate & Erect Bulk Enhancer Storage Shed: 2012
22. Zimbabwe Power Company (ZPC) - Various Plant Works: 2012
23. Techno Expert - Stainless Steel Balustrading for NRZ Princess Court Building: 2013
24. Poly Foil - Rigging of New Machinery into building: 2014
25. NSV Counselling Engineers - Fabricate and Erect Lift Support Steelwork for NRZ - Princess Court Building: 2014
26. Techno Expert - Refurbishment for Dominican Convent: 2014
27. Blanket Mine – Fabrication of Gold processing quench tank - 2016
28. AFM Northend Assembly – Fabrication, Site Installation c/w sheeting of a 24m x 12m shed - 2017
29. Murowa Diamonds – Steel fabrication Site Installation c/w sheeting and cladding of Core shed structure - 2017
30. Schweppes- Fabrication and Site Installation of 1 60m3 water tank -2017
31. Zimplot (Mealie Brand) – Roof repairs c/w Fabrication and fixing of steel purlins : 2017-2018

PHOTO GALLERY



Rigging in Constricted Areas



Installation of 31m High Chimney Stack



Service & Walkway Bridge Fabricated & Erected.



Erection of Mono Pitch High Roof.



Erection of New Stainless Steel Tanks



Service Bridge Tower Installing handrailing & Open Grid Flooring.



Fabrication & Erection of Canopy Steelwork



Water Cooling Plant Erected.



Fabricated Ore-pass Chute

PHOTO GALLERY



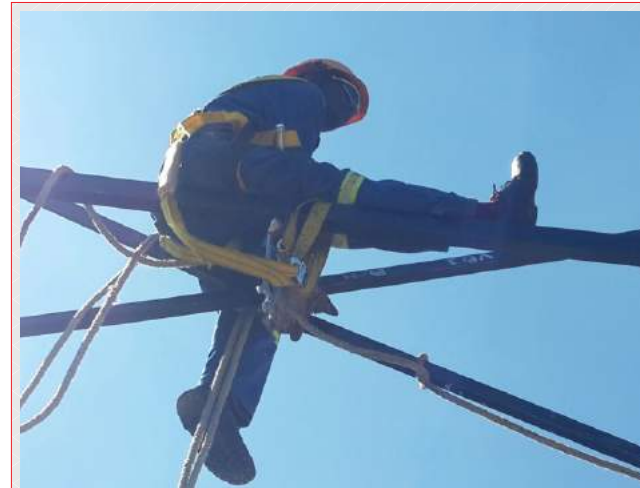
Machinist at Work



Structural Steel Works



Team meeting : Project Planning



Qualified Steel Erectors



Steel Fabrication & Welding

MANAGEMENT PROFILE

Operations

Mbongeni Matiwaza

A Holder of a National Diploma in Mechanical Draughting & Design Technology and a Certificate of Competency in Project Management, Mbongeni Matiwaza is a very experienced structural and Mechanical Engineering Practitioner. His over 15 years experience involves; Project Management of steel constructions, underground mine installations & mechanical works, Supervisory management on mining & construction project, Design, Draughting in structural steel, platework, material handling, Mining Equipment Machinery and Civil Works Draughting & Tender estimation. Mbongeni Matiwaza is an Associated Member of South African Institute of Draughting and Member of Zimbabwe Institute of Project Management (PMZ).

Technical

Paul Webster Gwaze

B. Eng (Hons) in Industrial and Manufacturing Engineering (NUST 2003) National Diploma in Mechanical Engineering (Byo Polytech 1991) National Technicians Certificate – Mechanical Engineering (1989) National Intermediate Technicians Certificate – Mechanical Engineering (1988) A seasoned Structural & Mechanical Steel technician cum Engineer, Paul has over 20 years experience in the Engineering field. His early years in his career took him through major steel fabricators like Hogarths Engineering and Morewear Industries. He has also worked extensively with renowned Consulting Engineering Companies like Project Planning & Design and Booyse & Associates. One of his major career highlights is when he successfully presided over the detailing, fabrication and site installation of JM Nkomo International Airport steel project upgrade.

Marketing Manager

Vincent Tawanda Padoro

A holder of a Bachelor of Commerce Honours Degree in Marketing Management (ZOU), Diploma in Project Management (PMIZ), Group Diploma in Management Studies (CPM), Diploma in Marketing, National Certificate in Fabrication Engineering (HEXCO), Fabrication, Welding Inspection and Quality Control (C & G of London), Quality Assurance Part 1 & 2 (C & G of London), Industrial Management (UK), Supervisory Management (ZIM), Certificate in ISO 9000 : 2008 (SAZ), Advanced Fabrication Engineering and Non Destructive Testing Training Programme (JICA – Cairo, EGYPT). He is currently working towards an MBA qualification. Vincent is a seasoned Engineering Professional who is now an accomplished Marketer boasting of more than 25 years industrial experience working in various portfolios. Padoro is currently with HEMS Africa Engineering as its Marketing Manager based in Harare.

Finance Manager

Milton Shoniwa,

A holder of a B.Tech(Accounting) UZ, MBA(ZOU) ACIS, ADV DIP CIMA, Reg PubAcc, Reg TAX Acc. Milton Shoniwa is an experienced Accountant with 27 years in the Finance and Accounting field. He spent 7 years at Cold Storage Company as a Divisional Accountant. 4 years was spent with Metso Minerals Zimbabwe as a Finance Manager. Milton joined Hems Africa Engineering in April 2018 as an Finance manager

Administration

Jotamu Mutanda

B.Tech Management Degree Honours (UZ) Masters in Business Administration MBA (ZOU) A seasoned Engineering Administrator, with over 20 years experience in the engineering industry. The initial nine (9) years were spent at Hogarths Engineering Ltd as a Projects Commercial Administrator. In year 2000, he moved to Zeco Holdings where he worked in various capacities and eventually elevated to the position of Marketing Executive. In year 2008, Jotamu moved to his current employer, Hems Africa in the capacity of Sales and Marketing Executive. He was later elevated to his current position as General Manager.

DIRECTOR'S PROFILE

MANAGING DIRECTOR

NGONIDZASHE HERPSON PARADZAI

An Industry trained Engineer and a founder of Hems Africa. He is a holder of a certificate in Industrial Management from the Institute of Management (UK) and in later years studied for a B.Com degree in Management with Unisa.

He started his career as a Metalwork and Technical Drawing high school teacher and joined Radiator and Tinning as a Trainee draughtsman in 1988. He also did basic Machinshop Craft Practice with the Bulawayo Polytechnic, Microsoft Project (MSP) – TC Systems, and several other managerial courses.

Mr. Paradzai, was then employed by OSC process Engineering (UK) as an Engineering Expeditor. This was contract employment to completion of the project (Feb 1990 to Feb 1991). The position entailed liasing with many subcontractors in Zimbabwe who were concerned with fabrication, and supply of mechanical and electrical materials for the rehabilitation of a multi-million dollar Coke Ovens and By-products Plant for Zimbabwe Iron and Steel Company (Zisco) Ltd at Redcliff, Zimbabwe.

In March 1991, Mr Paradzai joined Hogarths Engineering as a Draughtsman/Estimator. In the next 10years, Mr. Paradzai excelled and was promoted to the position of Chief Estimator and later Contracts Manager. He also had a short stint with Zeco Zimbabwe as Projects Manager and later returned to Hogarths.

Finding no further opportunities within the company, Mr. Paradzai founded Hems Africa and started o ffby providing Project Management Consultancy Services to the then established engineering companies. Major Structural and Mechanical projects managed were for Oliken Engineering being the Zimasco blocking Plant Project and the Mimosa Phase 4 expansion project.

From 2002 Mr. Paradzai established the Engineering division of Hems Africa specialising in Steel Fabrication, Machining and Cranage.

The Company has grown into a reputable force in the Engineering sector with a spacious and well equipped workshop and a Cranage division with Cranes ranging from a 14Ton to a 60 Ton Crane. The company has a professional technical team and a skilled labour force able to tackle projects of any size. With Hems Africa, Mr. Paradzai has given leadership in various Structural and Mechanical projects throughout the country.



MEMBERSHIP TO ASSOCIATION

1. **ZIE**- Zimbabwe Institute of Engineers
2. **CIFOZ**- Construction Industry Federation of Zimbabwe
3. **CZI**- Confederation of Zimbabwe Industries
4. **EISAZ**- Engineering Iron and Steel Association of Zimbabwe

