



## **COMPANY PROFILE**

gettyimages  
Gary Edgington / Eye



<b>Company Name</b>	Longden Enterprises (Pvt) Ltd
<b>Trading Name</b>	Steelpower
<b>Year of Incorporation</b>	1996
<b>Registration Number</b>	1431/96
<b>Vat Number</b>	10002711
<b>Postal Address</b>	15191 Kelvin West Bulawayo
<b>Physical address</b>	15191 Chrome Road, Kelvin West Bulawayo
<b>Telephone</b>	+263775807947 +2638644142811
<b>Website</b>	<a href="http://www.longdensteel.com">www.longdensteel.com</a>

gettyimages  
Gary Edgington / E

## **PRIMARY CONTACTS**

**Managing Director**

**Cell**

**Email**

John Marangwanda

+263712403240/+263735665848

[jmarang@longdensteel.com](mailto:jmarang@longdensteel.com)

**New Business Director**

**Cell**

**Email**

Masimba Marangwanda

+263785987375

[masimba@longdensteel.com](mailto:masimba@longdensteel.com)

**Operations**

**Manager**

**Cell**

**Email**

Tapiwa Marangwanda

+263774014996

[tapiwa@longdensteel.com](mailto:tapiwa@longdensteel.com)

gettyimages  
Gary Edgington / Eye



A background image showing a close-up, perspective view of several parallel steel reinforcement bars (rebar) with a ribbed texture, receding into the distance.

## **BOARD OF DIRECTORS**

### **Chairman (Non – Executive)**

Batanai Chingwena

Managing Partner  
Corporate Excellence Zimbabwe (Pvt) Ltd

### **Non – Executive**

Charm N. Mukuwane Chief Consultant  
Creative Solutions

Beatrice J Moyo  
Associate Partner  
Mushoriwa Pasi Corporate Attorneys

### **Executive**

John Marangwanda  
Managing Director

Masimba Marangwanda  
New Business Director

gettyimages  
Gary Edgington / Eye

The background of the entire page is a grayscale, high-contrast photograph of numerous parallel steel reinforcement bars (rebar) with a ribbed texture, arranged in a perspective that recedes into the distance.

## **VISION**

“To be the leading structural steel engineering contractor.”

## **MISSION STATEMENT**

“We will operate anywhere in a safe and healthy way, delivering quality products and services.”

## **PRODUCTS AND SERVICES**

- Reinforcing Steel (Cutting, Bending & Fixing)
- Structural Steel;(Angle Iron, Channel Iron, Window Section, Flat Bars, Tube & Pipe, MS Sheets & Plates, IPE Section, Universal Beams & Columns)
- Weld Mesh (S156, S193, S245, S395, S617)
- Black Annealed & Galvanized Wire
- Palisade Fencing & Balustrades
- Mining Roof Support
- Designing, Fabrication & Erection of Steel Structures
- Threaded Holding Down Bolts
- Electricity Line Materials, Stay Sets, Bow & Thimble

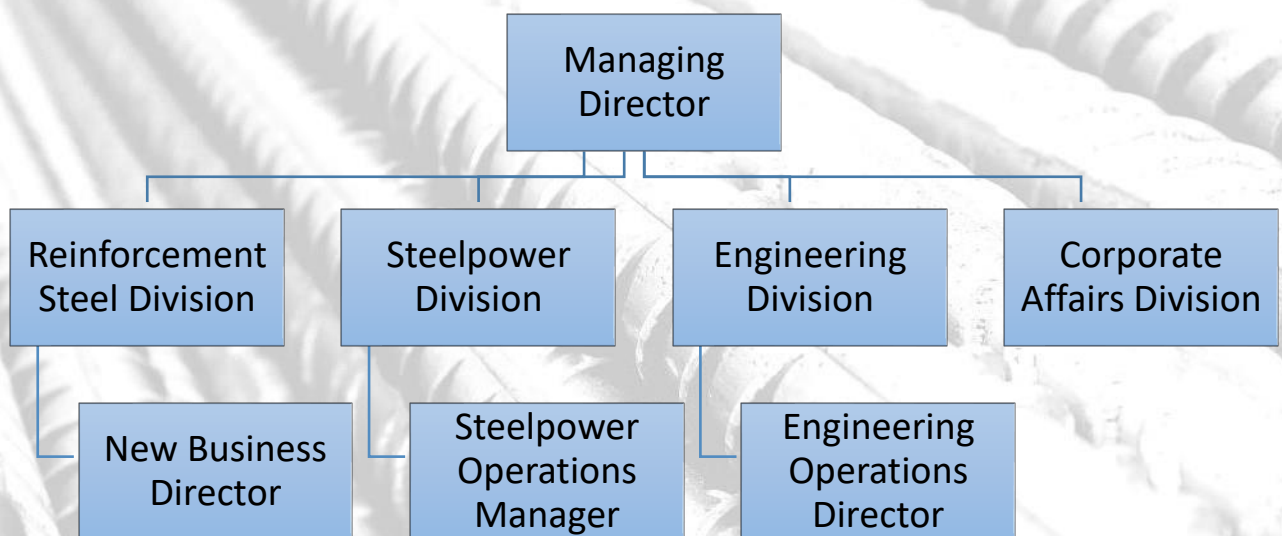
gettyimages  
Gary Edgington / E

## About Us

Longden Steel is Zimbabwe's first ISO 9001:2015 certified engineering contractor that started in 1996 and has grown from being a steel supplier to a customer focused, engineering contractor that is solutions based.

Steelpower is one of the company's 4 operational divisions.

## Organisational Structure



gettyimages  
Gary Edgington / Eye

## **Value Proposition**

As an engineering contractor we are committed to bring best engineering solutions to the built environment in a sustainable, efficient and cost-effective way through strategic planning, leadership and management skills offering:

- Total project management with a single point of contact including documents management, coordination through proper planning and execution.
- Customization that results in streamlined service delivery to bring convenience.
- Product excellence – quality, affordable and reliable.
- A recognized track record for projects fulfilment and delivery

## **Physical Resources**

We provide the best available tools and equipment for our workforce to perform with maximum efficiency. We have the capacity to process 30 tons per shift of reinforcing steel cut and bend as per bending schedule, with delivery done using our fleet of vehicles. We also invested in modern ICT to enhance effective communication, exchanging information between other production facilities and keeping abreast of our production plans and status.

Our engineering division has installed capacity to fabricate all type of structural steel in accordance with design specifications. This compliments us to provide total engineering solutions to our customers.

## **Human capital**

Employees are regarded as the driving force behind the company's value proposition, performance and commitment to international standards fulfilment. We invest in our workforce by conducting inhouse training as well as sponsored skills training with different institutes to make sure we have the best skilled labour force within the company. Our technical acumen and engineering skills have enabled us to continuously provide quality solutions in steel engineering.



## **Sales and service**

Our sales and service are managed through a streamlined network, effectively and efficiently serving customers using unique data management system, enabling on time and accurate delivery of customer requirements.

## **Healthy and Safety**

Longden is committed to provide its employees and stakeholders with a “Zero Harm” operating environment which is also clean and healthy.

## **Recent Track Record**

- Murowa Diamonds – Crown Jewel Project
- Zimplats - Ngwarati Mine
- Latter Day Saints – Harare Temple
- Zimbabwe CRSG– Mbuya Nehanda Statue
- Min of Public Works -Manyame Hospital
- St Charles Lwanga Secondary School – Structural Roof
- Sanganayi Flats – Two Storey Accommodation Blocks
- DDF bridges (Somgolo & Fakanye Bridges)
- Sino Hydro- Hwange Power Station Unit 7 & 8 Cooling Towers
- ZCC Samuel Centenary Academy – Structural Roof
- Kutaura Enterprises – Structural Roof
- Tabernacle of God – Structural Roof
- PRIMEDIA - Billboards
- Vanderbeg – Tank Stands
- Manifest – Clinics (Cowdry Park, Southlea Park, Mberengwa)

## **Certification**

ISO 9001: 2015

## **Associations**

We are proud members of

- CIFOZ
- EISAZ
- MAZ

gettyimages  
Gary Edgington / E