



# CCE

## CATER CITY EQUIPMENT

SUPPLIERS OF UPMARKET BUTCHERY, BAKERY,  
CATERING & FOOD SERVICE EQUIPMENT



\$110



\$771



\$1600



\$1200



\$4500

**SUPERMARKETS**



\$220



\$130

Cold / Freezer Rooms  
Dough / Cake Mixer  
Plates / Cups  
Bread Slicer / Ovens  
Pie / Chip Warmers  
Stove / Gas & Electric  
Chaffing Dishes / Chip  
Fryer  
Chicken Ratisseries  
Mincer-electric / Manual  
Meat Cutter & Many More

Buy online on

[catercityonline.com](http://catercityonline.com)

[sales@catercityequipment.com](mailto:sales@catercityequipment.com)

**BAKERY**

\$1800



\$3800

\$4200



\$120



\$350



\$5500



**BUTCHERY**

\$3000



**CATERING**

\$50



+263 718 723204 | +263 772 700 316 | +263 778 048 133 | +263 772 297 118

Victoria Falls  
686 Syringa Road  
Sweet Holiday Homes Resort

No 22 Tabolt Rd  
Southerton Opposite  
Delta Breweries, Harare

No 14949  
Imbvubu rd Cnr Cevil Ave  
/ Old Gwanda Rd.  
Selborne Park, Bulawayo

## ELECTRIC CHIP FRYER TABLE MODEL

Dimensions:  
280 x 400 x 250  
Power: 220V  
Capacity: 5lt

Price: \$120



Model: EF81

## ELECTRIC CHIP FRYER TABLE MODEL

Dimensions: 570 x 400 x 250  
Power: 220V  
Capacity: 5lt x 2

Price: \$195



Model: EF82

## ELECTRIC CHIP FRYER FLOOR MODEL

Dimensions:  
813 x 628 x 1100mm  
Litres per pan: 12lt  
No. of pans: 2  
Power: 220Vx

Price: \$984.89



Model: HEF212

## GAS CHIP FRYER

Dimensions:  
290 x 470 x 470mm  
Capacity: 5.5 lt  
No. of pans: 1

Price: \$245.61



Model: EF71

## GAS CHIP FRYER

Dimensions:  
580 x 470 x 470mm  
Capacity: 5.5 lt x 2  
No. of pans: 2

Price: \$377.04



Model: EF72

## GAS CHIP FRYER FLOOR MODEL

Dimensions:  
813 x 628 x 1100mm  
Litres per pan: 12lt  
No. of pans: 2

Price: \$984.89



Model: GF212

## POTATO PEELER FLOOR MODEL

Dimensions:  
780 x 420 x 1400mm  
Capacity: 15kg / 1 load  
Power: 220v  
Peeling Time: 45-60 sec.

Price: \$1970.61

Model: POT001



## PEELO-MASTER POTATO PEELER FLOOR MODEL

Dimensions:  
910(L) x 640(W) x 510(H)  
Capacity: 10kg / 1 load  
Power: 50hz 230v  
Peeling Time: 45-60 sec.  
Weight: 50kg

Price: \$1970.61

Model: PEEL001



## CHIP WARMER

Dimensions:  
340 x 630 x 489mm  
Voltage: 230v  
Weight: 7 kg

Price: \$360.61

Model: WYD819



## CHIPPER

Dimensions: 12mm  
Capacity: 7 x 7 Hole

Price: \$114.84  
Model: CHIP007

Dimensions: 14mm  
Capacity: 6 x 6 Hole

Price: \$130  
Model: CHIP006





**ELECTRIC SCHWARMA**

Dimensions:  
600 x 700 x 100MM  
Power: 220V  
Weight: 35kg

Price: \$114.9.18

Model: WTE890



**GAS SCHWARMA**

Model: WYE792  
Dimensions:  
600 x 700 x 100MM  
Weight: 35kg

Price: \$114.8.18

Model: WYE793



**CHICKEN GRILLERS**

Dimensions:  
590 x 690 x 660  
Output:  
8 med chickens  
Power: 220V

Price: \$1067.86

Model: YXD266



**CHAFFING DISH S/STEEL POLISHED**



Dimensions:  
630 x 350 x 330mm  
Capacity: 9 lt  
Weight: 51 kg  
Price: \$44.19

Model: CHAF 090

**ROUND CHAFING DISH WITH ROLL TOP LID & S/STEEL LEGS**

Dimensions:  
510 x 540 x 480mm  
Capacity: 20 lt No.  
of pans: 1

Price: \$229.18

Model: AT51363



**OBLONG CHAFING DISH WITH ROLL TOP LID AND S/STEEL LEGS**



Dimensions: 660 x  
490 x 460mm

Price: \$163.46

Model: AT61363-2

**SEALING MACHINE**

Sealing Bar:  
200,300,400 & 500mm  
Heating Time:  
0-15 sec  
Power: 0.3Kw Weight:  
3.3kg

Price: \$65.55 (200mm), Price: \$81.98 (300mm)  
Price: \$98.48(400mm), Price: 163.46 (500mm)



**FLAT TOP GRILLER WITH OVEN**

Dimensions:  
520x406x309  
Weight: 23kg  
Capacity: 28lt  
Power: 1000w

Price: \$4300



**HOT FOOD BAR**

Dimensions:  
1074X653X728  
Weight: 95KG  
Power: 2.4KW

Price: \$1650

Includes 6x Half Inserts + Lids



**URN S/STEEL**

Model: URN10T  
Litres: 10  
Power: 220v  
Weight: 10kg  
Price: \$120

Model: URN20T  
Litres: 20  
Power: 220v  
Weight: 20kg  
Price: \$180

Price: \$250 (45 Litres)



Model: URN30T  
Litres: 30  
Power: 220v  
Weight: 25kg  
Price: \$200

**BAIN-MARIE**

Power: 0.73kw  
Dimensions: 739 x 770 x  
268 Power: 230v Weight:  
18kg  
Price: \$400 (1 division)  
Price: \$650 (2 division)  
Price: \$850 (3 division)

Model: HEB2



**BAIN-MARIE**

Power: 2.7kw  
Dimensions: 1070 x 770  
x 268 Weight: 22kg  
Price: \$990 (3 division)  
Price: \$1200 (4 division)  
Price: \$1400 (5 division)  
Price: \$1600 (6 division)

Model: HEB3



## Oil Jacketed Cooking Pots/ Boiling Pans

- Inner Pan - 1,6mm Type
- 304 Stainless steel with integral rim
- Oil Jacket - 2mm Mild Steel complete with filler tube, breather pipe and drain cock
- Outer Casing - 0,9mm Stainless steel with 38mm thick insulation
- Lid - 0,9mm type 304 Stainless steel, balanced lid with heat insulated handle
- Draw Off - 32mm nominal bore outlet controlled by valve with heat insulated handle
- Safety over-riding thermostat
- Ceramic withdrawable elements

**Price: \$6600**



## TILTING FRYING PAN

**Price: \$4000 (Electric)**

**Price: \$5300 (Gas)**



- Close grained, non-porous Cast iron pan with integral pouring lip
- Smooth tilting action throughout
- Pedestal clad in Stainless steel
- Self raising Stainless steel lid with insulated handle
- Tilting mechanism consist of a screwed spindle and bush, which is self-locking upon release of the hand wheel

## PIZZA OVEN



**Dimensions:** 1120 x 605 x 490mm

**Voltage:** 220v

**Capacity:** Approx. 20 Pizzas p/h

**Price: \$3284.89**

**Weight:** 54 kg **Model:** WDR12

## VEGETABLE CUTTER

**Power:** 0.73kw  
**Dimensions:**  
300 x 500 x 400MM  
**Power:** 230v

**Price: \$1642.00**



**Model:** IB-1080

## POPCORN MACHINE

**Dimensions:**  
520 x 380 x 670  
**Weight:** 24kg  
**Power:** 220V

**Price: \$350**

**Model:** WTP6A



## SPIT BRAAI + 5 SKEWER

**Dimensions:**  
700 x 700 x 350 mm  
Comes with motor unit,  
5 skewers, detachable  
legs & top grill.  
Motor is 16 RPM and can take + 25 kg weight

**Price: \$970**

**Model:** SPIT001



## SPIT BRAAI + GRILLER

**Dimensions:** 1500 x 700 x 700 mm high  
without spit on top which is detachable.  
Comes standard with large grill, wheels &  
table on the side.

Motor is 4,3 rpm 220V **Price: \$1250**

- takes weight of + 25kg **Model:** SPIT002



## GAS GRILL

**Model:** GR1004  
**Dimensions:** 560 X  
750 X 850 **Burners:** 4  
**Price: \$630**

**Model:** GR1006  
**Dimensions:** 790 X  
750 X 850 **Burners:** 6  
**Price: \$920**

**Model:** GR1008  
**Dimensions:**  
1020 X 750 X 850  
**Burners:** 8  
**Price: \$1200**

**Model:** GR1010  
**Dimensions:**  
1250 X 750 X 850  
**Burners:** 10  
**Price: \$1400**

**Model:** GR1012  
**Dimensions:**  
1520 X 660 X 880  
**Burners:** 12  
**Price: \$1600**



## PIE WARMER



**Dimensions:** 660 x 437 x 635  
**Volts:** 220-240V/50-60Hz  
**Power:** 1.84KW  
**Weight:** 33Kg  
**Price: \$350**

**Model:** WYK827

**BOILING TABLES GAS**

\*available in 4 sizes

**Model:** B01001  
**Dimensions:** 400 X 450 X 720  
**Burners:** 1

**Model:** B01003  
**Dimensions:** 1300 X 450 X 720  
**Burners:** 3  
**Price:** \$250



**Model:** B01002  
**Dimensions:** 900 X 450 X 720  
**Burners:** 2  
**Price:** \$200

**Model:** B01004  
**Dimensions:** 1800 X 450 X 720  
**Burners:** 4  
**Price:** \$280

**FLAT TOP GRILLER**

**Dimensions:** 500 x 380 x 300mm  
**Power:** 220V  
**Weight:** 10kg  
**Price:** \$250



**Model:** GH818 500mm

**PIE WARMER**



**Model:** WRS600  
**Dimensions:** 600 x 480 x 590  
**Weight:** 38kg  
**Power:** 220V  
**Price:** \$558

**Model:** WRS1200  
**Dimensions:** 1200 x 480 x 590  
**Weight:** 40kg  
**Power:** 220V  
**Price:** \$815

**Model:** WRS900  
**Dimensions:** 900 x 480 x 590  
**Weight:** 42kg  
**Power:** 220V  
**Price:** \$700

**INSERTS & LIDS**



**Model:** 11065  
**Description:** 1/1 x 65mm pan  
**Thickness:** 0.6mm  
**Dimensions:** 530x325x65

**Model:** 11100  
**Description:** 1/1 x 100mm pan  
**Thickness:** 0.6mm  
**Dimensions:** 530x325x100

**Model:** 12150  
**Description:** 1/2 x 150mm pan  
**Thickness:** 0.7mm  
**Dimensions:** 325x265x100

**Model:** 11000  
**Description:** 1/1 Standard Lids  
**Thickness:** 0.7mm  
**Dimensions:** 530x325

**Model:** 11150  
**Description:** 1/1 x 150mm pan  
**Thickness:** 0.7mm  
**Dimensions:** 530x325x100

**Model:** 12100  
**Description:** 1/2 x 150mm pan  
**Thickness:** 0.7mm  
**Dimensions:** 325x265x100

**Model:** 12000  
**Description:** 1/2 Standard Lids  
**Thickness:** 0.7mm  
**Dimensions:** 325x265

**Model:** 16150  
**Description:** 1/16 Standard Pans  
**Thickness:** 0.7mm  
**Dimensions:** 176x162x150

**JOLLY SEMI-AUTOMATICA 1 GROUP**



**Version:** Semi  
**Boiler:** 5 litres  
**Weight:** 34 Kg  
**Dimensions:** 37W x 54D x 51H cm  
**Power:** 2000 Watt  
**Voltage:** 220 V  
**Price:** \$3284.89

**JOLLY SEMI-AUTOMATICA 2 GROUP**



**Version:** Semi  
**Boiler:** 13.5 litres  
**Weight:** 54 Kg  
**Dimensions:** 66.5W x 54D x 51H cm  
**Power:** 3000 Watt  
**Voltage:** 220/380 V  
**Price:** \$5256.32

**JOLLY SEMI-AUTOMATICA 3 GROUP**



**Version:** Semi  
**Boiler:** 20.5 litres  
**Weight:** 70 Kg  
**Dimensions:** 90W x 54D x 51H cm  
**Power:** 5000 Watt  
**Voltage:** 220/380 V  
**Price:** \$6570.61



**SINKS SINGLE**



**Model:** SIN050  
**Dimensions:** 750 x 680 x 900  
**Capacity:** 1 x 50lt  
**Price:** \$409.89

**SINKS DOUBLE**



**Model:** SIN1150 **Dimensions:** 1700 x 680 x 900  
**Capacity:** 1 x 50lt, 1 x 150lt  
**Price:** \$660

**Model:** SIN250 **Dimensions:** 1700 x 680 x 900  
**Capacity:** 2 x 50lt  
**Price:** \$740

**Model:** SIN0150 **Dimensions:** 1700 x 680 x 900  
**Capacity:** 2 x 150lt  
**Price:** \$830

**SINKS SINGLE**



**Model:** SINGLO900 ASSEMBLING 1 SINK TABLE WITH UNDERSHELF (bowl: 500\*500\*280)  
**Dimensions:** 900 X 700 X 850+100  
**Price:** \$520

**Model:** SINGLO1800 ASSEMBLING 2 SINK TABLE WITH UNDERSHELF (bowl: 500\*500\*280)  
**Dimensions:** 1800 X 700 X 850+100  
**Price:** \$560

**TABLE S/STEEL**



\*available in 3 sizes

**Model:** TAB011 **Dimensions:** 1,7m x 680 x 900  
**Price:** \$340

**Model:** TAB017 **Dimensions:** 1,7m x 680 x 900  
**Price:** \$390

**Model:** TAB024 **Dimensions:** 2,4m x 680 x 900,  
**Price:** \$460

**CANOPY SYSTEMS**



**Model:** CANO180  
**Dimensions:** 1800 x 1200  
 Galvanised, **Price:** \$1200

**Model:** CANO240  
**Dimensions:** 2400 x 1200  
 Galvanised, **Price:** \$1400

**Model:** CANO300  
**Dimensions:** 3000 x 1200  
 Galvanised, **Price:** \$1560

\*We manufacture any size of canopy's

**\*Canopy Includes:**  
 Pipes: 400mm Filters  
 Fans: 220V, 400m diameter  
 Rain Cowl, **Price:** \$600

**\*Additions**  
 Pipes  
 Filters  
 Fans  
 Rain cowl  
 Bends

**TABLE S/STEEL**

\*available in 3 sizes



**Model:** TABGLO1200  
 Work Bench With Splashback 1200 X 600 X 850+100  
**Price:** \$490

**Model:** TABGLO1800  
 Work Bench With Splashback 1800 X 600 X 850+100  
**Price:** \$540

**Model:** TABGLO2400  
 Work Bench With Splashback 2400 X 600 X 850+100  
**Price:** \$610

**BAINMARIE FLOOR MODEL**



**STRAIGHT GLASS**  
**Model:** IBV-3  
**Dimensions:** 1200 x 700 x 900  
**No. of divisions:** 3  
**Power:** 220V  
**Price:** \$1800

**Model:** IBV-4  
**Dimensions:** 1475 x 700 x 900  
**No. of divisions:** 4  
**Power:** 220V  
**Price:** \$2200

**ALSO AVAILABLE IN**  
**Model:** IBV-5 -5 DIVISION  
**Price:** \$2500  
**Model:** IBV-6 -6 DIVISION  
**Price:** \$2700

**BAIN MARIE FLOOR MODEL**



**Model:** BAIN1300SS **Dimensions:** 1300 x 1100 x 1350MM  
**Price:** \$3000

**Model:** BAIN1800SS **Dimensions:** 1800 x 1100 x 1350MM  
**Price:** \$3200

**Model:** BAIN2400SS **Dimensions:** 2400 x 1100 x 1350MM  
**Price:** \$4000

**BAIN MARIE FLOOR MODEL**

\* available in 2 sizes



**Model:** BAIN1300 C  
**Dimensions:** 1300 x 1100 x 1350  
**No. of divisions:** 3  
**Power:** 220  
**Price:** \$2500

**Model:** BAIN1800 C  
**Dimensions:** 1800 x 1100 x 1350  
**No. of divisions:** 5  
**Power:** 220V  
**Price:** \$3500

**PIE WARMERS FLOOR MODEL**



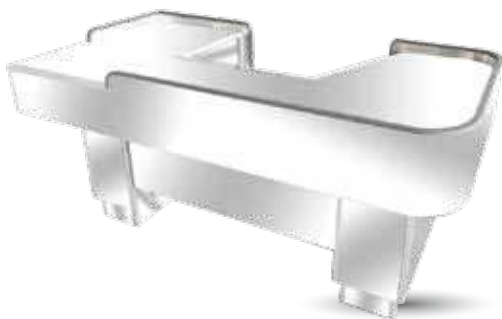
**Model:** TMD39A/1  
**Dimensions:** 1200 X 1100 X 1400  
**Power:** 220v  
**Price:** \$3200

**SWEET COUNTER**

**Model:** SWED180  
**Dimensions:** 1800 X 530 X 960  
**Price:** \$739.29



**S/STEEL CHECK OUT COUNTER**



**HEAVY DUTY**  
**Model:** CHE1800  
**Dimensions:** 1800 x 1000 x 1000  
**Price:** \$1313.46

**CHECK OUT COUNTER**



**LIGHT DUTY**  
**Model:** CHE1600 **Dimensions:** 1600 x 900 x 1000  
**Price:** \$820.61

**SOUP KETTLE**



**Model:** AT51588  
**Dimensions:** 360x400  
**Litres:** 10  
**Price:** \$196.32

**ICE CREAM MACHINE**



With pre-cooling and stand-by function  
**Price: \$2150**

**Model:** DS200  
**Dimensions:** 220 x 660 x 720 (mm)  
**Freezing Cylinder:** 1.6L  
**Production:** 15lt/per hour  
**Power:** 2200W  
**Voltage:** 220V-240V  
**Weight:** 41kg

Self-contained air cooled countertop model  
 Serves frozen yogurt, sorbet, custard, soft serve ice cream & gelato  
 14-18 min. typical freeze time  
 Auto consistency control for easy operation  
 Direct drive motor  
 Dishwasher safe components for easy cleaning

**ICE CREAM MACHINE**



**Price: \$3200 (floor Model)**  
**Price: \$2900 (Table Model)**

**Model:** VSP-25 PRO  
**Dimensions:** 543 x 635 x 1270 mm  
**Flavours:** 3  
**Freezing Cylinder:** 2x 1.6lt  
**Voltage:** 220V/50Hz, 230V/60Hz  
**Weight:** 115 kgs  
**Mix Hopper:** 2 x 4.3lt  
**Production:** 18-25lt/per hour  
**Motor:** 750w

Digital machine control  
 Hardness display  
 Cups counter  
 Fluorescent screen  
 Plastic beater  
 Removable drip tray  
 Embraco Compressor  
 Air cooled

**SLUSH MACHINE**

**Model:** XC224  
**Dimensions:** 400 (w) x 480 (d) x 790 (h)  
**Capacity:** 12lt x 2  
**Voltage:** 220V  
**Weight:** 46kg  
**Price: \$2956.32**

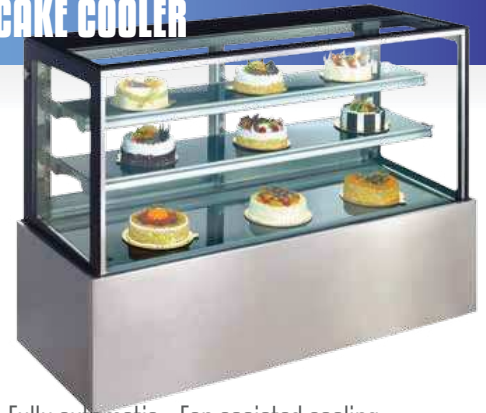


**Model:** XC336  
**Dimensions:** 600 (w) x 480 (d) x 790 (h)  
**Capacity:** 12lt x 3  
**Voltage:** 220V  
**Weight:** 65kg  
**Price: \$3777**



**SLUSH MACHINE**

**CAKE COOLER**



- Fully automatic • Fan assisted cooling
- Adjustable feet/casters
- Interior LED light with switch
- Fan assisted condenser
- Digital controller and temp. display
- Replaceable sliding door for easy cleaning
- Replaceable door gasket
- Individually illuminated glass shelves

**Model:** CL120  
**Dim:** 1200x700x1200  
**Weight:** 270kg  
**Power:** 0.97Kw  
**Temp:** 2-8°c  
**Price: \$4434**

**Model:** CL150  
**Dim:** 1500x700x1200  
**Weight:** 295kg  
**Power:** 1.05Kw Temp: 2-8°c  
**Price: \$4927.70**

**Model:** CL150 **Dim:** 1800x700x1200  
**Weight:** 320kg **Power:** 1.2Kw **Temp:** 2-8°c  
**Price: \$5584.89**

**JUICE DISPENSERS**

**JUICE DISPENSERS**

**Model:** LP18x2  
**Dimensions:** 500 (w) x 386 (d) x 728 (h)  
**Voltage:** 220v  
**Weight:** 332kg  
**Price: \$1477.50**



**Model:** LP18x3  
**Dimensions:** 725 (w) x 386 (d) x 728 (h)  
**Voltage:** 220v  
**Weight:** 40kg  
**Capacity:** 18lt x 3  
**Price: \$1806.32**





**UNDERBAR FRIDGE**

\*available in 2 sizes

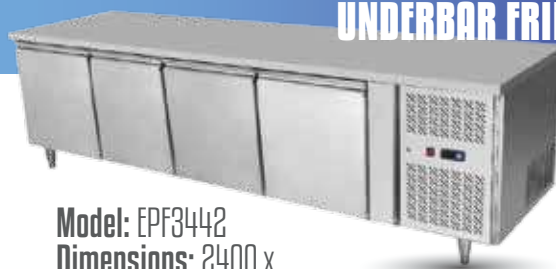


**Model:** EPF3731 **Dimensions:** 1800 x 755 x 905 **Power:** 220V **Temperature:** 0-5  
**No. of doors:** 3 Glass  
**Price:** \$2956



**Model:** EPF3741 **Dimensions:** 2400 x 755 x 905 **Power:** 220V  
**Temperature:** 0-5  
**No. of doors:** 4 Glass  
**Price:** \$3284

**UNDERBAR FRIDGE**



**Model:** EPF3442  
**Dimensions:** 2400 x 755 x 905 **Power:** 220V  
**Temperature:** 0-5  
**No. of doors:** 4 S/Steel doors  
**Price:** \$3613.46

**Model:** YPF9044 **Dimensions:** 1800 x 755 x 905 **Power:** 220V  
**Temperature:** 0-5  
**No. of doors:** 3 S/Steel Doors  
**Price:** \$3120.61

**PIZZA UNDERBAR**



**Model:** PIZZAUNDO02  
**Dimensions:** 1800 x 720 x 900  
**2 1/2 Doors**  
**Price:** \$3284.89

**Model:** PIZZAUNDO02  
**3 1/2 Doors**  
**Price:** \$3613.46

**GLOBAL UNDERBAR**

\*available in 2 sizes

**Model:** LG208H  
**Dimensions:** 1350 x 520 x 900  
**Weight:** 80kg **No. of doors:** 2  
**Price:** \$1260

**Model:** LG308H  
**Dimensions:** 1350 x 570 x 900 **Weight:** 90kg  
**No. of doors:** 3  
**Price:** \$1660



**DISPLAY FREEZER ISLAND STYLE**



**Island 2.2:** \$1600  
**Island 2.5:** \$3500  
**Island Curve:** \$5500  
**Island 1.6:** \$1800  
**Island 1.8:** \$2000

**Model:** CF520GL  
**Dimensions:** 1500 x 700 x 900  
**Power:** 220V  
**Litre:** 520, **Price:** \$1200

**DISPLAY CURVE GLASS FREEZER**



**Model:** WD-330Y **Dimensions:** 1375 x 675 x 975 **Power:** 220V-50Hz - 1560w  
**Temp:** -18°C - -22°C **Litre:** 330  
**Price:** \$1200

**DISPLAY FREEZER GLASS TOP**



**Model:** GT2505  
**Dimensions:** 2520 x 900 x 850  
**Litre:** 850  
**Price:** \$2900

**DISPLAY FREEZER GLASS TOP**



**Model:** SWD538  
**Dimensions:** 1800 x 900 x 850  
**Power:** 220V  
**Price:** \$21650

**ISLAND FREEZER GLASS TOP**



**Model:** WD830  
**Dimensions:** 2256 x 946 x 772  
**Power:** 220V  
**Litre:** 830lt  
**Price:** \$2500

**DISPLAY FRIDGE CURVE GLASS**



**Model:** ECO1300SS  
**Dimensions:** 1300 x 1100MM x 1350MM  
**Price:** \$3780

**Model:** ECO2500SS  
**Dimensions:** 2500 x 1100 x 1350MM  
**Price:** \$4800

**Model:** ECO1800SS  
**Dimensions:** 1800 x 1100MM x 1350MM  
**Price:** \$4400

## ICE MACHINE



**Model:** AZ20  
**Dimensions:** 360 x 470 x 603  
**Weight:** 35kg  
**Power:** 360W  
**Ice Storage:** 8kg  
**Max Production:** 22kg/24h  
**Price:** \$1650

## ICE MACHINE



**Model:** AZ40  
**Dimensions:** 558 x 536 x 827  
**Weight:** 55kg  
**Power:** 520W  
**Ice Storage:** 14kg  
**Max Production:** 48kg/24h  
**Price:** \$1800

## ICE MACHINE



**Model:** AZ70  
**Dimensions:** 558 x 536 x 827  
**Weight:** 55kg  
**Power:** 560W  
**Ice Storage:** 14kg  
**Max Production:** 68kg/24h  
**Price:** \$2960



**Model:** AZ120  
**Dimensions:** 558 x 536 x 827  
**Weight:** 55kg  
**Power:** 560W  
**Ice Storage:** 40kg  
**Max Production:** 120kg/24h  
**Price:** \$3620

## ICE MACHINE EXCL ICE BIN



**Model:** AZ200L **Dimensions:** 762 x 610 x 530  
**Weight:** 60kg  
**Power:** 1440W  
**Max Production:** 200kg/24h  
**Price:** \$5300

**Model:** AZ300L **Dimensions:** 762 x 610 x 530  
**Weight:** 68kg  
**Power:** 1440W  
**Max Production:** 300kg/24h  
**Price:** \$6600





**Model:** AZ500L **Dimensions:** 762 x 610 x 530  
**Weight:** 81kg  
**Power:** 2050W  
**Max Production:** 500kg/24h  
**Price:** \$7700

**Model:** ICE BIN(AZ-180) **Dimensions:** 762 x 810 x 910  
**Weight:** 62kg  
**Ice Storage:** 180kg  
**Price:** \$1200

## ICE CREAM SCOOP DISPLAY



**Model:** BQG-1500  
**Dimensions:** 1500 x 1100 x 1300  
**Power:** 220V-50Hz - 1560w  
**Temp:** -18°C - -22°C  
**Price:** \$3300

FRIDGE	SINGLE DOOR FRIDGE SWING DOOR	DISPLAY FRIDGE CURVED GLASS	DAIRY FRIDGE
 <p><b>Model:</b> GD1140 <b>Dimensions:</b> 1140 x 630 x 2010 <b>Power:</b> 220V <b>Temperature:</b> 0-5°C <b>Litre:</b> 720 <b>Price: \$1650</b></p>	 <p><b>Model:</b> SCS-388WA <b>Dimensions:</b> 600 x 600 x 1900 <b>Power:</b> 220v <b>Temperature:</b> 0-5° <b>Litre:</b> 388lt <b>Price: \$1200</b></p>	 <p><b>Model:</b> KX 1.5 <b>Dimensions:</b> 1500 x 1100 x 1200 <b>Price: \$2300</b></p> <p><b>Model:</b> KX 2.0 <b>Dimensions:</b> 2000 x 1100 x 1200 <b>Price: \$2650</b></p> <p><b>Model:</b> KX 2.5 <b>Dimensions:</b> 2500 x 1100 x 1200 <b>Price: \$3200</b></p>	 <p><b>Model:</b> DA1800SS <b>Dimensions:</b> 2000 x 1100 x 2000mm <b>Price: \$10715</b></p> <p><b>Model:</b> DA2500SS <b>Dimensions:</b> 2500x1100 x 2000mm <b>Price: \$13300</b></p>

### DISPLAY FRIDGE STRAIGHT GLASS

\*available in 3 sizes



**Model:** DISCO13 **Dimensions:** 1300 x 1100 x 1350 **Power:** 220V **Temperature:** 0-5°  
**Price: \$23000**

**Model:** DISCO18 **Dimensions:** 1800 x 1100 x 1350 **Power:** 220V **Temperature:** 0-5°  
**Price: \$3285**

**Model:** DISCO24 **Dimensions:** 2400 x 1100 x 1350 **Power:** 220V **Temperature:** 0-5°  
**Price: \$3697**

### COLD ROOM TRAILER

**Dimensions:** 1200x1800x1800  
Chromadek interior and exterior

**FREEZER ROOM TRAILER ALSO AVAILABLE**  
**Price: \$4800**



## COLD ROOMS / FREEZER ROOMS



**Model:** COLO180  
**Dimensions:** 1,8 m x 1,8 m x 2,4 m  
**Temperature:** 0- 5°  
**Thickness of panels:** 75mm  
**Price: \$5100**

**Model:** COLO240  
**Dimensions:** 2,4m x 2,4m x 2,4m  
**Temperature:** 0-5°  
**Thickness of panels:** 75mm  
**Price: \$5700**

**Model:** COLO30 **Dimensions:** 3m x 3m x 2,4m  
**Temperature:** 0-5° **Thickness of panels:** 75mm  
**Price: \$6400**

**Model:** FREQ180 **Dimensions:** 1,8m x 1,8 x 2,4m **Temperature:** ≤ -18° **Thickness of panels:** 120mm  
**Price: \$6317**

**Model:** FREQ240  
**Dimensions:** 2,4m x 2,4m x 2,4m  
**Temperature:** ≤ -18° **Thickness of panels:** 120mm  
**Price: \$6735**

**Model:** FREQ30 **Dimensions:** 3m x 3m x 2,4m **Temperature:** ≤ -18° **Thickness of panels:** 120mm  
**Price: \$7802**

We manufacture to any size and specification. Also available Blast Freezers and Glass Door Freezer and Cold Rooms



**DECK OVEN SINGLE**

Also Available in Gas(PL2)



Model: PL2 & SL3  
 Dimensions: 1255 x 770 x 530(PL2) **\$1000**  
 1655 x 770 x 530(SL3) **\$1400**

Power: 220V  
 Loaves: 10(PL2) & 20(SL3)  
 Pans per deck: 1 x 600 x 400(PL2)  
 3 x 600 x 400(SL3) **\$1300**  
 Weight: 40kg(PL2) & 60KG(SL3)  
 kW: 9

**DECK OVEN DOUBLE**



Model: SL6  
 Dimensions: 1655 x 770 x 1240  
 Power: 380V  
 Loaves: 40  
 Pans per deck: 2 x 600 x 400  
 Weight: 250kg  
 kW: 18  
**Price: \$2700**

**DECK OVEN TRIPLE**



Model: SL9  
 Dimensions: 1655 x 770 x 1540  
 Power: 380V  
 Loaves: 60  
 Pans per deck: 3 x 600 x 400  
 Weight: 350kg  
 kW: 27  
**Price: \$4500**

**DOUGH MIXER**



**20LT**  
 Model: HS20  
 Power: 220V  
 Capacity: 20lt  
 Weight: 40kg Flour  
 Capacity: 10kg  
**Price: \$1650**

**30LT**  
 Model: HS30  
 Power: 220V  
 Capacity: 30lt  
 Weight: 60kg Flour  
 Capacity: 15kg  
**Price: \$1900**

**50LT**  
 Model: HS50A  
 Power: 380V / 220V  
 Capacity: 50lt  
 Weight: 100kg Flour  
 Capacity: 20kg  
**Price: \$2800**

**CAKE MIXER**

**Price: \$1100**



**10LT**  
 Model: B10  
 Dimensions: 470 x 370 x 600  
 Power: 220V  
 Capacity: 10lt  
 Weight: 45kg

**20LT**  
 Model: B20  
 Dimensions: 530 x 480 x 800  
 Power: 220V  
 Capacity: 20lt  
 Weight: 60kg  
**Price: \$1320**

**BREAD SLICER**

TABLE MODEL- GRAVITY FEED



Model: TR12  
 Dimensions: 650 x 750 x 740  
 Power: 220V  
 Slice size: 12mm  
 Weight: 50kg

**\$2800**

**DOUGH DIVIDER**



Model: CG36  
 Model: NFK-30  
 Dimensions: 410 x 570 x 130  
 Weight: 135kg  
 Capacity per piece: 30 - 180g  
 Power: 220V Specifications:  
 36 pieces  
**Price: \$3613.46**

## DOUGH MOULDER



Model: CG38

**Dimensions:**  
1400 x 670 x 1120 **Power:**  
220V **Loaves:** 20 **Capacity:** 30  
- 1500kg **Weight:** 180kg  
**Conveyor size:** 380 **Roller**  
**length:** 300 **Rolling up:** 2.5 - 3  
**Price: \$5420.61**

## PROOVER SINGLE DOOR



Model: FX13A  
**Dimensions:**  
500 x 710 x 1740  
**Power:** 220V  
**Weight:** 65kg  
**Takes:** 13 trays  
**Price: \$1149.18**

## PROOVER DOUBLE DOOR

Model: FX6A  
**Dimensions:** 1150 x  
720 x 1670 **Power:**  
220V **Weight:** 90kg  
**Takes:** 26 trays  
**Price: \$1642.04**



## DOUGH SHEETER



Model: LSP520  
**Dimensions:**  
2430 x 875 x 1230  
**Power:** 220V,  
**Speed:** 133  
**Weight:** 280kg  
**Price: \$7063.46**

## CONVECTION OVEN



Model: TTO131  
**Voltage:** 2.4kW  
**Dimensions:** 620 x 600 x 570  
**No. of trays:** 4  
**Weight:** 41kg  
**Tray Size:** 440 x 320mm  
**Price: \$1500**

## CONVECTION OVEN



Model: TTO169 **Voltage:** 1.2kW  
**Dimensions:** 620 x 600 x  
570  
**No. of trays:** 4 **Weight:** 39kg  
**Power:** 220V  
Steam Function  
**Tray Size:** 440 x 320mm  
**Price: \$1650**

## CONVECTION OVEN



Model: TTO130  
**Voltage:** 2.4kW  
**Dimensions:** 840 x 800 x 570  
**No. of trays:** 4  
**Weight:** 41kg  
**Power:** 220V  
Steam Function  
**Tray Size:** 400 x 600mm  
**Price: \$1889.29**



## BANDSAW WITH MINCER



**220V**  
**Model:** BNA220  
**Dimensions:**  
 500 x 550 x 1800  
**Power:** 220V  
**Blade:** 2300mm  
**Weight:** 45kg + Mincer  
**Price: \$1142**

## BANDSAW

**380V**  
**Model:** BNSW380  
**Dimensions:**  
 850 x 850 x 1800  
**Power:** 380V, 1,5KW  
**Blade:** 112" **Weight:**  
 200kg  
**Price: \$3203.57**

**220V**  
**Model:** BNSW220  
**Dimensions:**  
 850 x 850 x 1800  
**Power:** 220V, 1,5KW  
**Blade:** 112" **Weight:**  
 200kg  
**Price: \$3367.86**



## JUNIOR BANDSAW



**Model:** BNSJ220  
**Dimensions:**  
 600 x 600 x 1500  
**Power:** 220V  
**Weight:** 70kg  
**Price: \$1806.32**

## MINCER FLOOR MODEL

**380V-FLOOR MODEL Model:** TC42  
**Dimensions:** 1200 x 700 x 1100  
**Power:** 380V, 3KW **Weight:** 550kg  
**Price: \$3800**

**Model:** TC42A  
**Dimensions:**  
 1200 x 700 x 1100  
**Power:** 220V, 3Kw  
**Weight:** 650kg  
**Price: \$3500**

**Model:** TC52  
**Dimensions:** 1200 x 700 x 1100  
**Power:** 380V, 5.5Kw **Weight:**  
 650kg  
**Price: \$6600**



## SAUSAGE FILLERS



**Model:** SV-3  
 Two speed  
 Upright  
**Dimensions:** 360 x 180 x 300  
**Weight:** 4.5kg  
**Price: \$329**



**Model:** SV-5  
 Two speed  
 Upright  
**Dimensions:** 360 x 180 x 350  
**Weight:** 7kg  
**Price: \$500**



**Model:** SV-7  
 Two speed  
 Upright  
**Dimensions:** 600 x 200 x 400  
**Weight:** 10kg  
**Price: \$572**



**Model:** SV-15  
 Two speed  
 Upright  
**Dimensions:** 360 x 200 x 500  
**Weight:** 15kg  
**Price: \$886**



## REBER MINCER - TABLE MODEL



**MINCER 12**  
**Model:** 9501NSP **Production:** 50-90 kg/h **Weight:** 16,3 kg  
**Holes plate mm:** 6 Suitable also for sausages production  
**Price: \$750**

**MINCER 22**  
**Model:** 9500 NSP **Production:** 70-120 kg/h  
**Weight:** 21,3 kg  
**Holes plate mm:** 8  
 Suitable also for sausages production  
**Price: \$990**

**MINCER 32**  
**Model:** 9504 NSPI **Production:** 100-160 kg/h **Weight:** 25 kg  
**Holes plate mm:** 10, **Price: \$1350**

## POLONY SLICER



**Model:** POL0220  
**Dimensions:** 580 x 466 x 420  
**Power:** 220V  
**Blade diameter :** 220mm  
**Weight:** 25kg

250mm & 300mm also available

**Price: \$820.62 (220mm)**  
**Price: \$1149.18 (250mm)**

**Price: \$1477 (300mm)**

## VACUUM SEALERS



**Model:** DZ300  
**Dimensions:** 385 x 280 x 1200  
 Internal Dimensions: 340 x 380 x 70mm  
**Power:** 220V  
**Weight:** 35Kg  
**Sealing bar:** 1  
**Price: \$1750**

## VACUUM SEALERS



**Model:** DZ400  
**Dimensions:** 500 x 600 x 500  
 Internal Dimensions: 440 x 440 x 70mm  
**Power:** 220V  
**Weight:** 110kg  
**Sealing bar:** 2  
**Price: \$1980**

## TENDERISER Skymesen



**Dimensions:** 530 x 470 x 220  
**Power:** 0.37kw  
**Weight:** 29kg, **Price: \$1642.04**

## PRINTING SCALES



**Model:** SM110DIGI  
**Platform Size:** 378 x 277  
**Memory:** 10000 PLU  
**Weight:** 15kg  
**Price: \$2140**

## PORTION SCALES



- 5 weighing units (kg, g, lb, oz, lb:oz)
- Simple user-friendly operation
- Large backlit LCD display
- Large stainless steel pan
- Rechargeable battery up to 150 hours operation

**Price: \$200**

**BEADAM®**

## RETAIL ELECTRIC SCALES



**BEADAM®**

- Large backlit LCD display
- Simple user-friendly operation
- Precision load cell technology
- Splashproof
- Full colour coded keypad with numeric entry
- Large stainless steel pan
- RS-232 bi-directional interface
- External calibration

**Price: \$715**

## RETAIL SCALES



- Large backlit LCD display
- Simple user-friendly operation
- Precision load cell technology
- Splashproof
- Full colour coded keypad with numeric entry
- Large stainless steel pan
- RS-232 bi-directional interface
- External calibration

**Price: \$715**

**BE**

**CARCASS SCALE**



**Model:** CARCASS001  
**Platform Size:** 295 x 215  
**Weight:** 300KG  
**Price:** \$1650

**INDUSTRIAL PLATFORM SCALE**



**Model:** PSE1300  
**Platform Size:** 360 x 480  
**Weight:** 300kg  
**Price:** \$250

**WRAPPING MACHINE**



**Model:** WRAP380  
**Power:** 0.75kW  
**Dimensions:** 380 x 670 x 158  
**Weight:** 6kg  
**Max Roll Size:** 380  
**Price:** \$163.46

**MINI BILTONG CABINET**



**Model:** BIL245  
**Dimension:** 580 x 460 X 1080  
**Weight:** 43kg  
**Chamber Size:** 500 x 450 x 910  
**Voltage:** 220v- 240v  
**Price:** \$1450

**BOWL CUTTER**



**Model:** QS620  
**Dimensions:** 755 X 710 X 940  
**Weight:** 126kg  
**Voltage:** 380v  
**Capacity:** 20  
**Price:** \$2956.32

**S/STEEL BILTONG CABINET**



**Model:** BIL1250  
**Dimension:** 1000 x 740 x 2015  
**Weight:** 120kg  
**Chamber Size:** 950 x 730 x 1750  
**Voltage:** 220v- 240v  
**Price:** \$3200

## CASH REGISTER



**Model:** g1000

An entry level thermal receipt cash register. Suitable for tuck shops, beauty salons, hair dressers & home stores.

**Price: \$520**

**FEATURES:**

- 14 departments
- 2564 PLUs (max)
- Stock control
- Monthly and daily report
- Re-call Receipt
- Receipt on/off
- 5 line LCD display
- 10 digit led rear display
- Thermal Printer

**Parameters:**

- Power supply: Ac100/120 or 240v, 50/60hz

## MARKING GUN



**Price: \$19**

**Model:** BASK001

**Price: \$15**

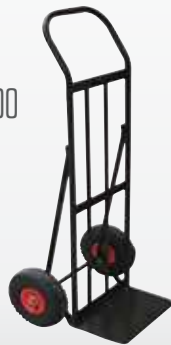


**Dimensions:**  
600 x 400 x 300

**Model:** M1001

**Dimensions:**  
600 x 400 x 1100

**Price: \$150**



## MONEY COUNTER



**Price: \$372**

**Model:** SHOP120

**Price: \$220**



**Dimensions:**  
1000 x 800 x 1200

**Model:** SHOP200



**Dimensions:** 800 x 600 x 1100  
**Price: \$150**

## 5 TIER SHELVING

**Dimensions:**  
570 x 400 x 250  
**Price: \$122**



**Model:** SHELO02

**Price: \$350**



**Model:** SHELO01

**Price: \$275**



## INDOOR / OUTDOOR CHAIR



- True Indoor/Outdoor chair
- Stackable (7-10)
- Virgin pp shell chairs with anti-uv and anti-aging additives
- Durable pigments that will resist fading in the sun
- Aluminium silver anodised legs
- Drain hole to prevent sediment stains

**Weight:** 3.3kg  
**Front Seat Height:** 440mm  
**Rear Seat Height:** 400mm  
**Arm Rest Height:** 650mm  
**Back Height:** 780mm  
**Width:** 560mm

**Price: \$30**

